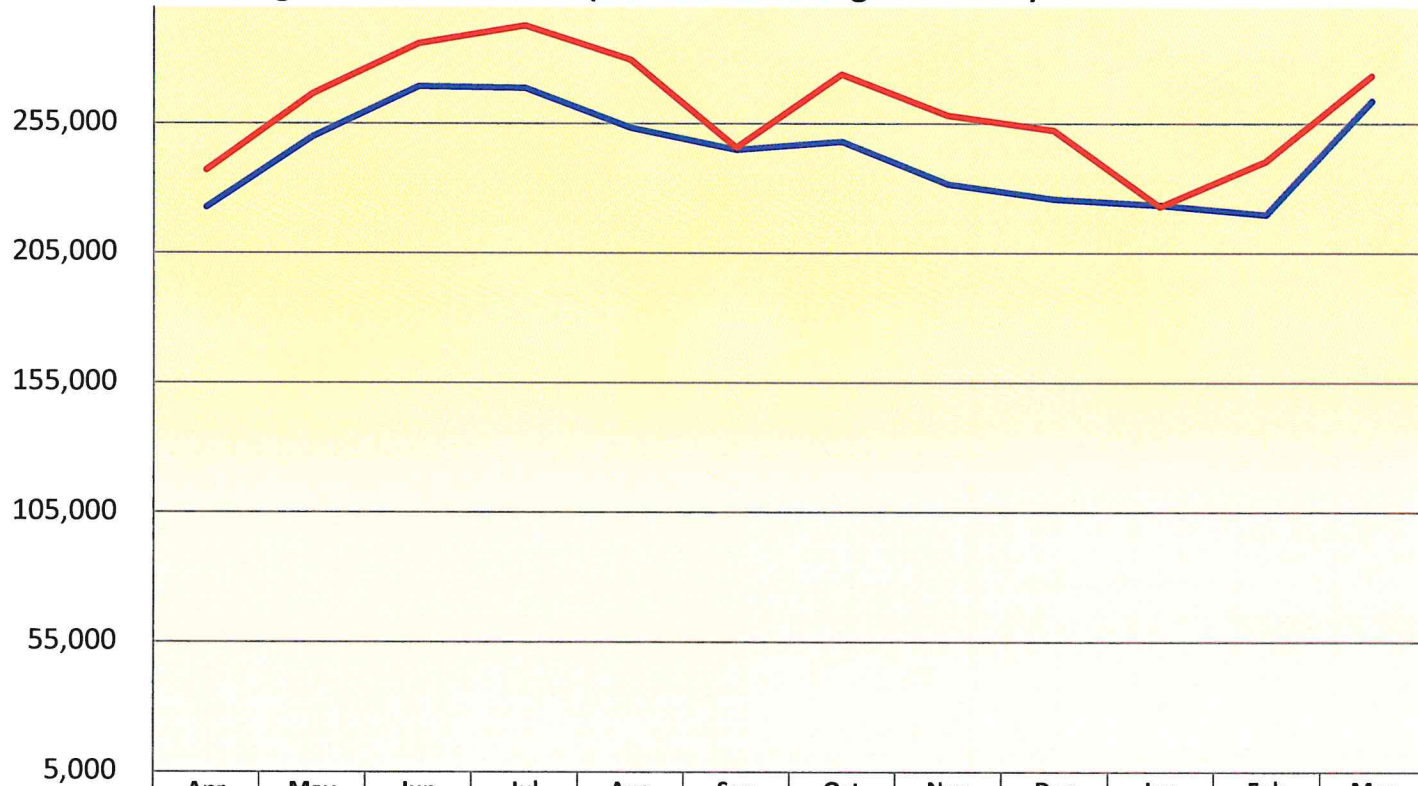


Des Moines Airport Authority
Traffic Statistics - March 2024

	Month of March		% Incr. (Decr.)	Year to Date		% Incr. (Decr.)
	2024	2023		2024	2023	
PASSENGERS						
Enplaned	131,440	129,840	1.2%	363,925	351,849	3.4%
Deplaned	141,776	133,756	6.0%	372,315	354,823	4.9%
Total	273,216	263,596	3.6%	736,240	706,672	4.2%
CARGO (LBS)						
Enplaned	2,259,079	2,604,118	-13.2%	6,543,669	7,464,630	-12.3%
Deplaned	2,661,258	3,215,066	-17.2%	7,452,434	8,476,849	-12.1%
Total	4,920,337	5,819,184	-15.4%	13,996,103	15,941,479	-12.2%
TOTAL PASSENGERS						
ALLEGIANT	51,084	57,928	-11.8%	126,937	138,876	-8.6%
AMERICAN	85,432	81,221	5.2%	231,710	217,716	6.4%
DELTA	44,180	41,123	7.4%	119,135	110,438	7.9%
FRONTIER	7,667	4,690	63.5%	18,759	16,244	15.5%
SOUTHWEST	31,460	24,633	27.7%	85,986	66,505	29.3%
UNITED	51,273	51,073	0.4%	148,911	150,954	-1.4%
CHARTERS	2,120	2,928	-27.6%	4,802	5,939	-19.1%
Total	<u>273,216</u>	<u>263,596</u>	<u>3.6%</u>	<u>736,240</u>	<u>706,672</u>	<u>4.2%</u>

Monthly Passenger Totals

Rolling 12-Month Periods (most recent at right of table)



	Apr	May	Jun	Jul	Aug	Sep	Oct	Nov	Dec	Jan	Feb	Mar
— 12-24 Months Prior	222,479	249,721	269,247	268,581	253,168	244,672	247,932	231,475	225,777	223,330	219,746	263,596
— Prior 12 Months	236,919	266,291	285,639	292,563	279,467	245,536	273,741	257,959	252,219	222,797	240,227	273,216
% change	6.5%	6.6%	6.1%	8.9%	10.4%	0.4%	10.4%	11.4%	11.7%	-0.2%	9.3%	3.6%

Passenger Airline Market Share For the Month of March 2024

